



Winstone Wallboards

- on a journey of continuous improvement

John Jamison


March 2023



Many of New Zealand's glaciers could disappear in a decade, scientists warn

Glaciers becoming 'smaller and more skeletal', annual end-of-summer survey of the snowline finds






**FIRE
EMERGENCY**

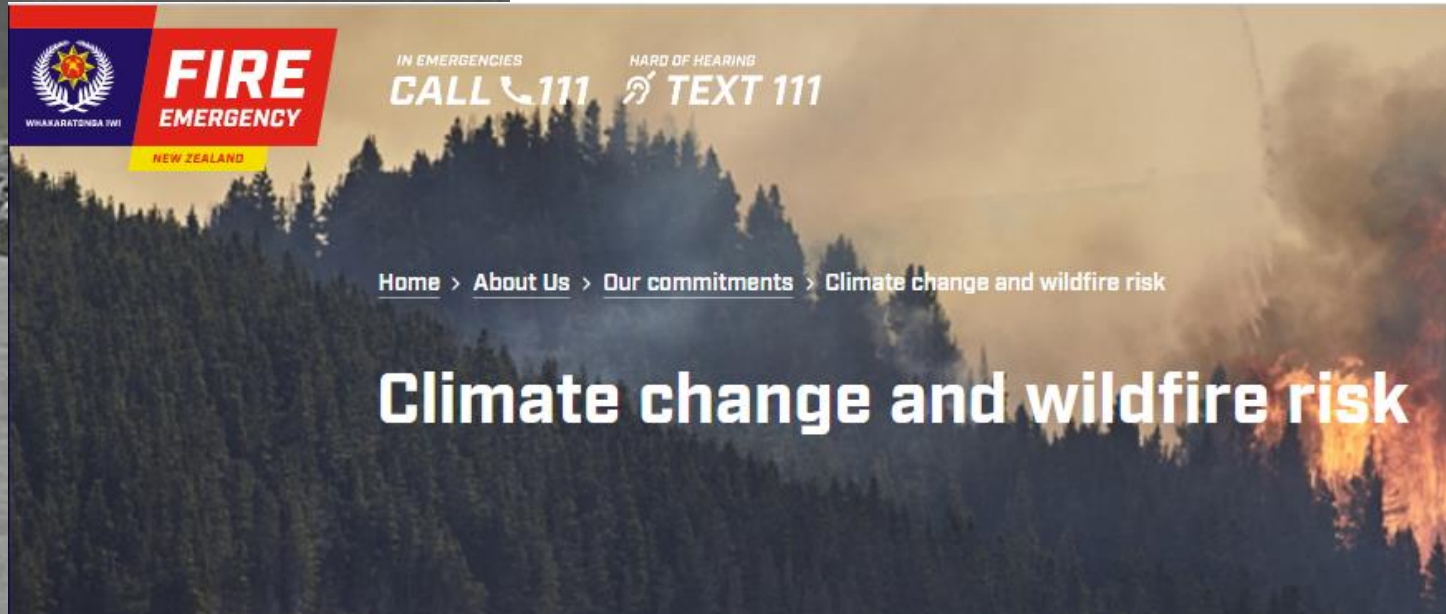
WHAKARATONGA 111
NEW ZEALAND

IN EMERGENCIES
CALL 111

HARD OF HEARING
 **TEXT 111**

[Home](#) > [About Us](#) > [Our commitments](#) > [Climate change and wildfire risk](#)

Climate change and wildfire risk



Life Cycle Assessment of plasterboard

by
Barbara Nebel,
Michael Held

March 2006



Identifying hot spots in the plasterboard life cycle



Source: thinkstep-anz



Designing Out Waste

Design Out Waste

Feasibility Study

Project Inception

Targets and intent set and included in design contracts

Feedback and inform the next project

Finished Project

Actual waste levels achieved

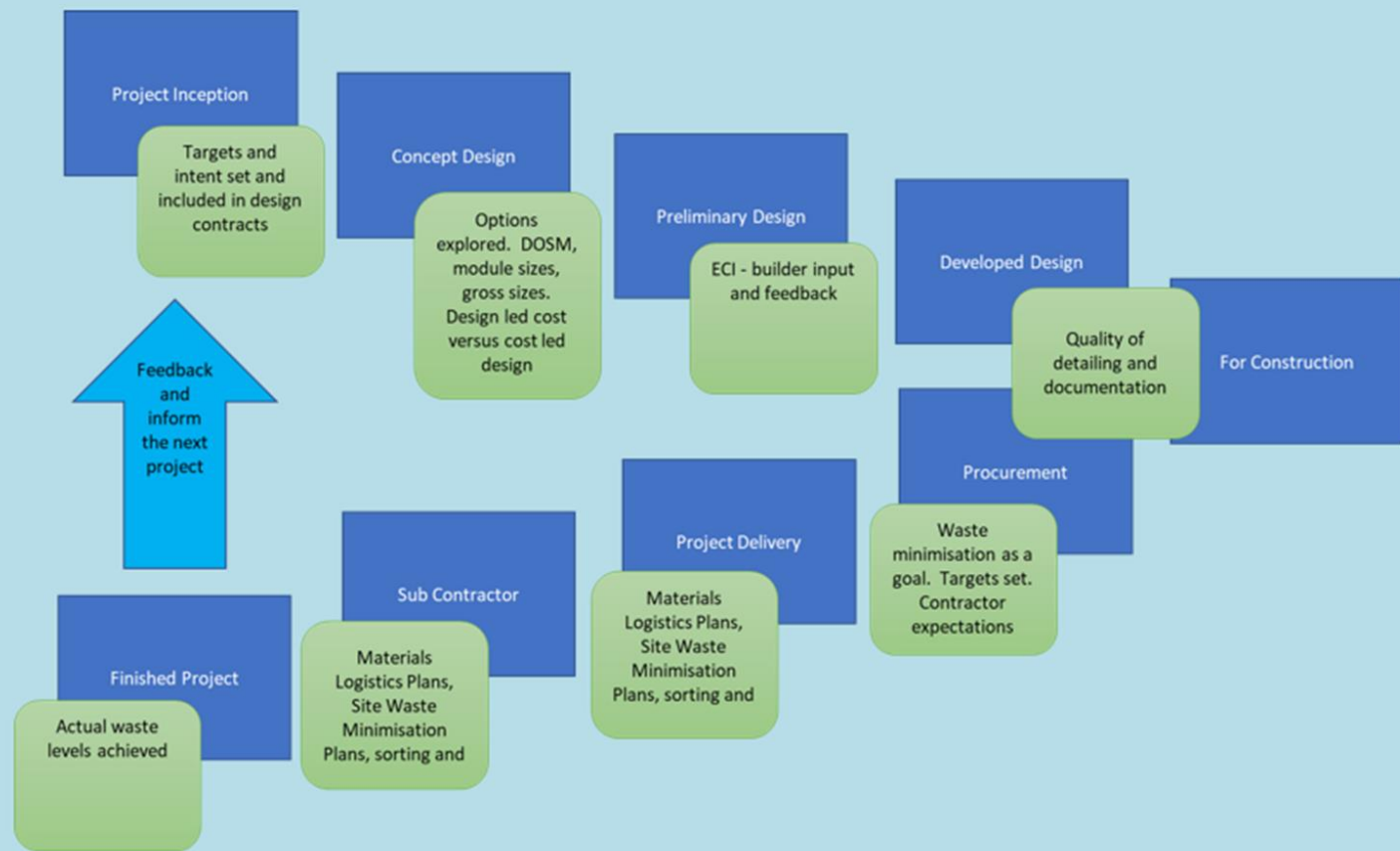
Material Logistics Site Visit Minimise Plans, so

Finding Value Waste

Design Our Waste

Feasibility Study

Feasibility Stu



Typically **15%** but

Construction and Demolition waste accounts for up to



Skip the Skips Process

Baseline Monitoring

Monitor a building site for waste generated day by day through the project. Report waste kg/m² with attribution to cause: Design, QS, Order, Use, captured by stage

tion
op

Work with actu
and develop n

ite for a further project to set targets
waste

on
g

Monitor nex

are

Report v





GIB® Plasterboard Offcut Recycling Services

Sustainability

Sustainability

Environmental Certifications

GIB® Plasterboard Waste Minimisation Resources

GIB® Plasterboard Offcut Recycling Services

GIB® Plasterboard Waste Composting

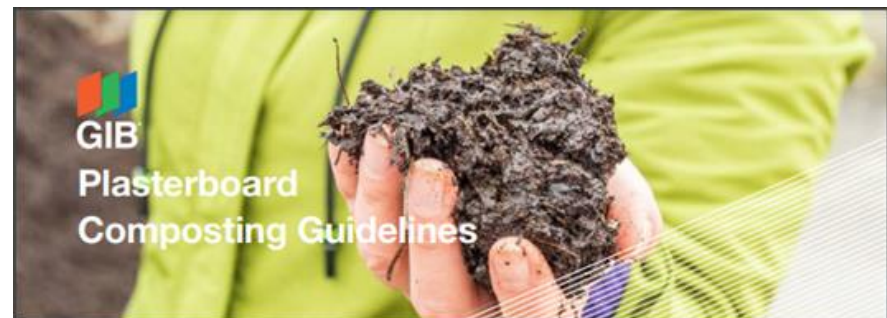
Homestar rating tool and GIB® Plasterboard

Green Star rating tool and GIB® Plasterboard

GIB® plasterboard can be recycled with the gypsum core reused in a range of compost and agricultural products. This allows customers the opportunity to divert plasterboard offcut away from landfill.

Below are a list of recycling business offering plasterboard offcut site collection and recycling services. Winstone Wallboards is currently working to expand the availability of offcut recycling throughout New Zealand.

Region	Recycling Provider	Contact details	Service Information
Auckland	Green Gorilla	09 633 2244 021 899 861 cjones@greengorilla.co.nz	Service Details
Hamilton	Purpose Fill	team@purposefill.co.nz	Service Details
Taranaki	Waste Management	staylor@wastemanagement.co.nz	Service Details
Nelson	Waste Management	ZBryce@wastemanagmeent.co.nz	Service Details
Christchurch	Waste Management	MHall@wastemanagement.co.nz	Service Details
Queenstown	All Waste Ltd, Waste Management	0800 225 927, orders@allwaste.co.nz JMcEvoy@wastemanagement.co.nz	Service Details (Allwaste) Service Details (Waste Management)



Why consider including Gypsum into composting products?

Gypsum is a soft sulfate mineral and widely used as a fertiliser, compost, or cement additive. It's also used as the main constituent in plaster and plasterboard.

Recycled gypsum sourced from plasterboard off-cuts is commonly used as a bulking material in composting manufacture. Gypsum contains calcium and sulphur, both of which are essential plant nutrients. Calcium for proper cell division and for normal cellular functions, while sulphur help plants to create specific amino acids and as well as being a component for plant vitamins and enzymes.

Gypsum assists to build and revitalise the soil structure by encouraging small clay and silt particles to bind together to form stable soil aggregates. This provides improved water retention, storage, and drainage. Plants exhibit better root development and yield. Gypsum does not alter pH of the soil.

What GIB® plasterboard offcuts are suitable for recycling into compost products?

The gypsum contained within the vast majority of GIB® plasterboard is suitable for use in composting applications, this includes:

- GIB® Standard, including GIB Wideline®
- GIB Aqualine®
- GIB Fyreline®
- GIB Ultraline®
- GIB Braceline® GIB Noiseline®
- GIB Barrierline®

GIB® plasterboard sheets not suitable for use in composting applications include:

- GIB X-Block®
- GIB Weatherline®
- GIB Toughline®/ GIB Toughline® Aqua

Other considerations when recycling GIB® plasterboard offcuts into composting product:

- Only uncoated GIB® plasterboard offcuts should be accepted for recycling. Painted or coated offcuts may contain sources of unknown contaminants.
- Plasterboard offcuts should only be sourced from new build construction sources. Old offcuts typically sourced from renovation or demolition projects may contain unknown contaminants.
- As much as practically possible plasterboard offcuts sent to recycling should be touch dry.
- Plasterboard offcuts should be crushed into fine particles as well as being screened to remove the paper liner leaving the recycled gypsum for inclusion in composting products.

Do the non-gypsum additives used in GIB® plasterboard represent an issue for use in compost products?

GIB® plasterboard mostly consists of gypsum and front and back paper liners. A small percentage of non-gypsum additives are also included depending on the type of GIB® plasterboard.

Based on an extensive review of local and international research, Winstone Wallboards is of the opinion there are no known health concerns or toxic risk to soil organism's through the inclusion of recycled gypsum sourced from



Greening Construction Supply Chains

Cooney, Ali
and University

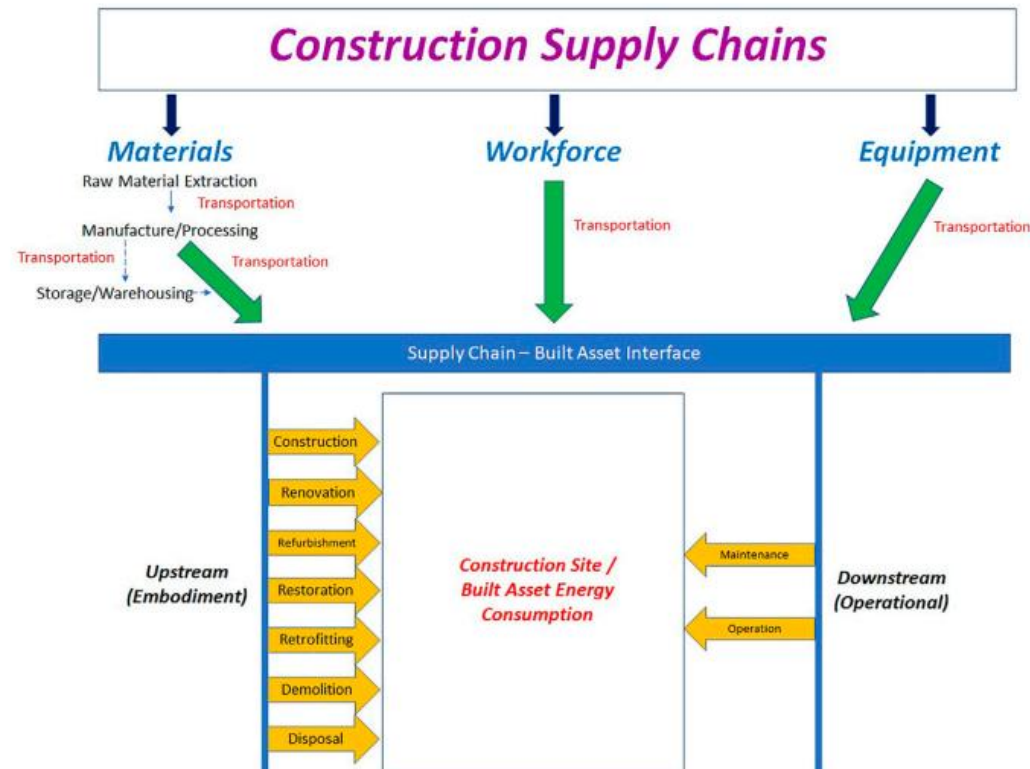


FIGURE 1 | Life Cycle Energy Analysis of a built asset (Authors' conception based on Cox and Ireland, 2002; Ramesh et al., 2010; Thomsen and van der Flier, 2011; Chastas et al., 2016).

WE ARE ALL ON A JOURNEY...



Manufacture efficiently....

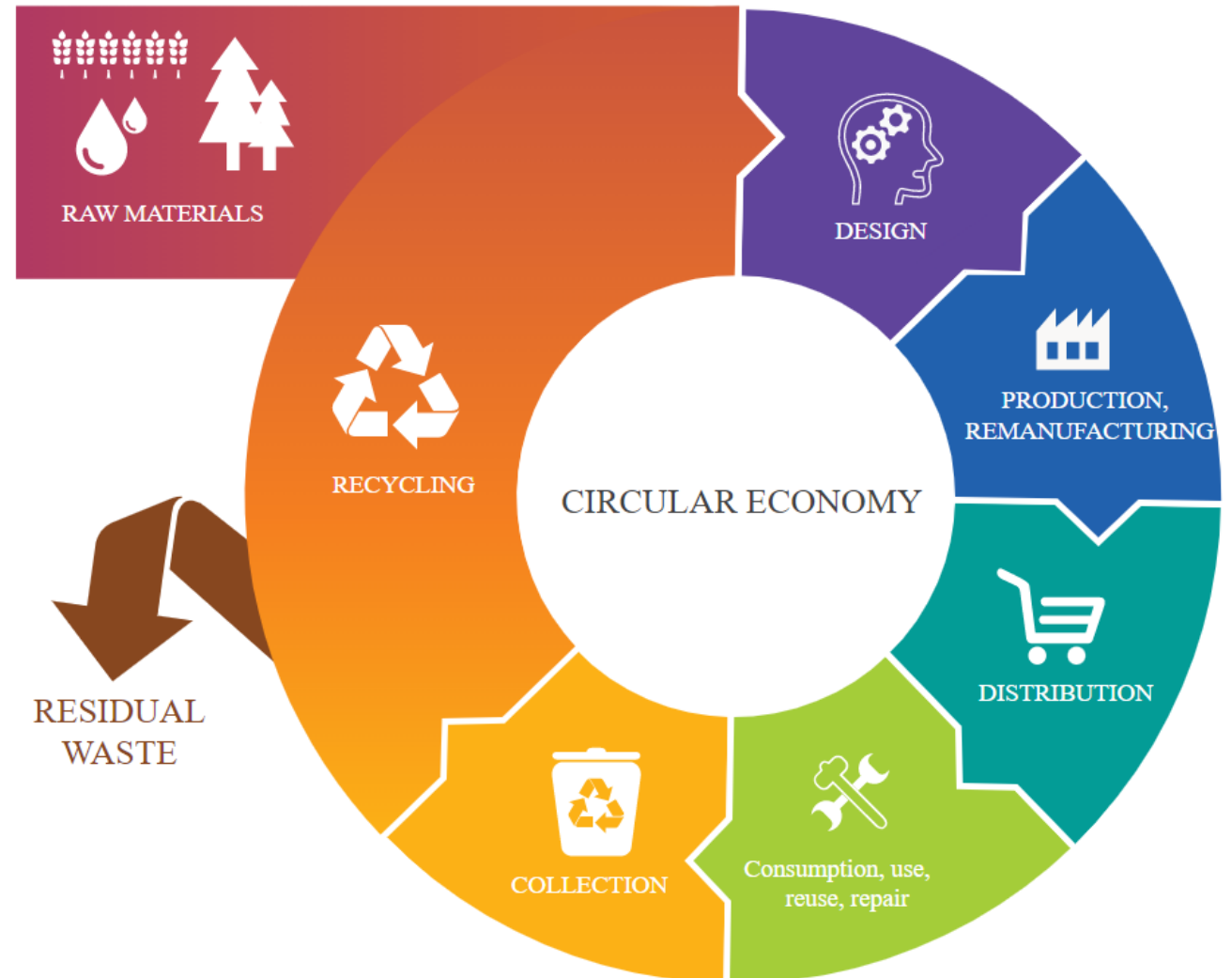
Reduce use...

Use what we do need to use efficiently....

Recycle...

And move towards

Becoming circular....





Because we care.....